

ALEXIS EBERT

THE MARILYN MONROE
OF THE BACK WOODS



MUSIC

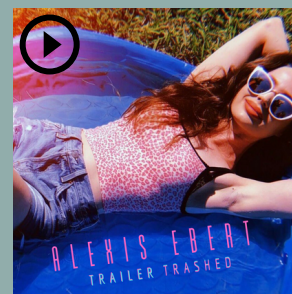
Alexis is a free-spirited wild child who lives for adventure yet is tamed by a peaceful silence that comes from within.

The Oregon native began singing professionally when she was just six years old--opening for Tanya Tucker--and before entering her teenage years, she took the spotlight on the same stages as Keith Urban, Miranda Lambert, Reba McEntire, Sugarland, Trace Adkins and many more. She landed an audition for "Country Tonight" (Branson) and made the grade to join the cast of 60. She performed two shows a day, six-days-a-week over the course of a six-month tour as a twelve-year-old.

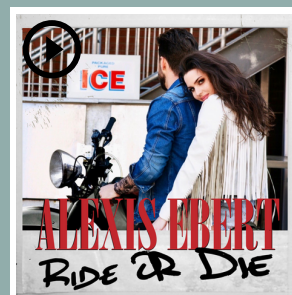
Alexis "arrived" in Music City, TN in 2003 and captured the attention of **Warner Bros.** bigwigs who threw a label deal on the table nearly on the spot. She joined the Warner Bros. roster in 2004, secured a major publishing deal, and recorded an entire album (featuring 12 Alexis Ebert originals) with the goal to release a debut single to country radio. The plan was nixed when a new chief was seated; she moved on to sign a staff writing deal with **Sony ATV Publishing.**

Alexis' talents have been tapped by motion picture film producers; "The Real Me" is featured in the **Disney** movie "**Confessions Of A Teenage Drama Queen**" (Lindsay Lohan). She also landed a role in the 2014 film "**Like A Country Song**" (Billy Ray Cyrus); two Ebert tunes appear on the soundtrack.

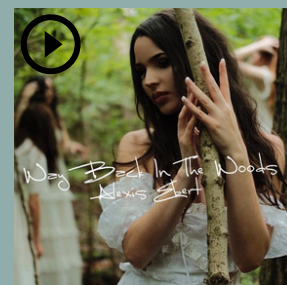
Now signed with two of the most prominent independent publishing companies on The Row (**Wrensong Music Publishing/Rezonant Music Publishing**), Alexis is positioned to introduce a series of signature songs in 2019 as a launch to her first full-length album. The project, co-produced by Rodney Clawson and Mickey Jack Cones, spotlights tunes co-written with multi award-winning songwriters Clawson, Luke Laird, David Lee Murphy, Craig Wiseman, Jim McCormick and Tammy Hyler. Alexis made introductions to country radio and major digital/streaming platforms with the lead single, "Ride Or Die," in March 2019. She made her debut appearance at CMA Fest 2019 to perform on the **CMA "Spotlight Stage."**



"Trailer Trashed" (2019)



"Ride Or Die" (2019)



"Way Back In The Woods" (2019)

OPENING ACT

Jessica Andrews • John Barry • Sawyer Brown
Tracy Byrd • Mark Chesnutt • Joe Diffie
Hal Ketchum • Miranda Lambert • Lila McCann
Neal McCoy • Mindy McCready • Mindy McCready
Reba McEntire • Kellie Pickler • Restless Heart
LeAnn Rimes • Sha Na Na • Doug Stone
Tanya Tucker • Keith Urban • The Ventures

ON STAGE

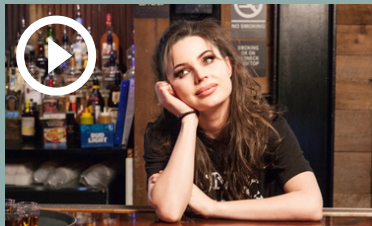
CMA Fest Spotlight Stage • Oregon Jamboree • Pendleton Roundup
Country Festival Tule Lake • Willamette County Festival
The Listening Room • The Sutler • The Valentine
Redneck Riviera • The Root Cellar

"I must say, I'm sorry that Alexis had to miss the Shania Twain concert, but if Shania Twain had heard her sing, she might have thought it was the other way around. She was great. You have a great gift, young lady, and I wish you well..."

~President Bill Clinton



VIDEOS



"Ride Or Die"
Music Video



"Girl Crush" (Little Big Town)
Cover Video



"Way Back In The Woods"
Music Video

"She has a dark, smoky delivery that matches the deep-bass rumble of the rocking production perfectly. Fiery and sexy."

~Robert K. Oermann, MusicRow Magazine

SET LIST

- "RIDE OR DIE"
- "TRAILER TRASHED"
- "SOAK UP THE SUN" (SHERYL CROW)
- "WANTED"
- "SHAMPOO AND CHAMPAGNE"
- "KISS" (PRINCE)
- "HELL ON YOUR HANDS"
- "SOUTHERN GROWN"
- "WAY BACK IN THE WOODS"
- "SHAMELESS" (GARTH BROOKS)
- "DON'T ASK QUESTIONS"
- "NIGHT GROW WINGS"
- "IT'S A LITTLE TOO LATE" (TANYA TUCKER)

IN FILM

"The Real Me" Featured in "Confessions of a Teenage Drama Queen" (2004)
"Real Women" and "My Kind Of Guy" Featured in "Like A Country Song" (2014)

SEEN & HEARD

CMT.com • MusicRow Magazine • Taste Of Country
Country Note • Nashville Music Line • Nashville Noise
Road Dog Media • Center Stage Magazine • Country Music News Intl.
Talk Nerdy With Us • Nashville Music Guide
TODAY In Nashville (NBC) • The Ty Bentli Show (NASH-FM)
650 AM WSM • Y'ALL Radio



MANAGEMENT & BOOKING

SMASHVILLE ENTERTAINMENT
TAMMY@SMASHVILLEENTERTAINMENT.COM
615-830-3674



www.alexisebertmusic.com

MEDIA CONTACT

MUSIC CITY MEDIA
PR@MUSICCITYNEWS.COM
615-770-2994